

Polysafe Apex 55

PRODUCT SPECIFICATION

Key Features

- > Extremely durable 3mm vinyl safety flooring
- > Pendulum test - 55+ (slider 96)
- > Enhanced slip resistance to withstand high viscosity contaminants
- > Welded seams for impervious finish
- > Specialist safety floor designed for use in commercial kitchens & food production areas



Product Format	Standard	Result		
Gauge	ISO 24346 (EN 428)	3.0mm		
Total Weight	ISO 23997 (EN 430)	3600g/m ²		
Sheet Size	Size	Shades	Quantity per Box	Coverage per Box/Roll
Sheet	2m x 15m	8	-	30m ²
Performance Requirements	Standard	Result		
General Performance	EN 13845 ASTM F1303	Conforms Type II, Grade I, Class B Backing		
Use Area	ISO 10874 (EN 685)	23, 34, 43		
Enhanced Slip Resistance	EN 13845 AS 4586 RRL Pendulum Test DIN 51130 / DIN EN 16165 Ann. B ASTM D2047	ESf R12 ≥55 (wet test - 4S Rubber / Slider 96) R12 SCOF >0.8		
Abrasion Resistance	EN 13845	50,000 cycles		
Reaction to Fire	EN 13501-1 ASTM E648 CAN/ULC S102.2 AS ISO 9239-1	Class Bfl-S1 Class 1 FSV < 300; SDV < 500 >8.0kW/m ²		
Static Electrical Propensity	EN 1815	≤2.0kV Classified as 'antistatic'		
Residual Indentation	ASTM F970 (Modified)	≤0.005" (750psi)		
Resistance to Light	ASTM F1515	ΔE ≤ 8.0 - Meets		
Resistance to Heat	ASTMF1514	ΔE ≤ 8.0 - Meets		
Sustainability	Standard	Result		
BRE Green Guide		A+ Generic		
Generic EN 15804 EPD		Available		
Recyclable		100%		
Recycled Content		Contains recycled material		

REACH		Compliant
FloorScore		Certified
Finnish M1 Classification		Certified
AgBB/ABG		Pass
Responsible Sourcing	BES 6001	Excellent

Maintenance Performance	Standard	Result
Resistance to Chemicals	ISO 26987 (EN 423)	Good resistance
	ASTM F925	Good resistance
Alco Hand Gels	Compatible for use with most commonly used alco-based hand gels	
Steam Cleaning	Suitable for steam cleaning on a periodic basis	

All Polyflor commercial sheet vinyl ranges provide a continuous, impervious and hygienic flooring solution which can be confidently cleaned in accordance with recommended maintenance procedures and approved maintenance products. The implementation of an effective cleaning regime is the most important defence against infection.



Polyflor Ltd. Head Office

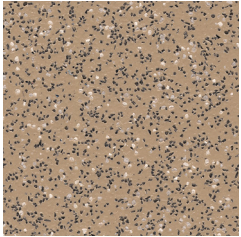
PO Box 3, Radcliffe New Road, Whitefield, Manchester, M45 7NR • Tel: +44 (0) 161 767 1111 • Email: info@polyflor.com • www.polyflor.com

© At the time of writing and publication of sheet, all the information is specified correctly. The company reserves the right to change the specifications of this product at any time without prior notice to third parties.

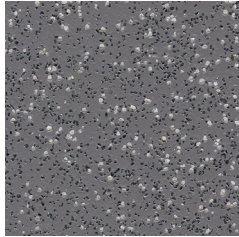
Polysafe Apex 55



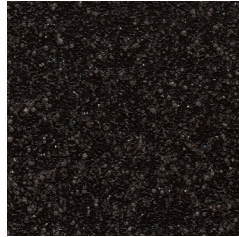
RANGE SHADES



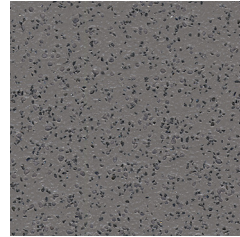
Sandstone 4207 w/r 4207
NCS S 4010-Y30R LRV 28



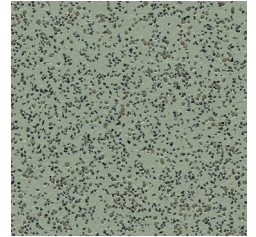
Basanite 4208 w/r 4208
NCS S 6005-R80B LRV 19



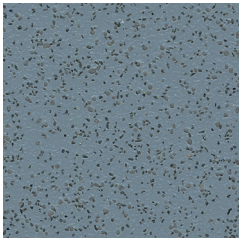
Biotite 4203 w/r 8640
NCS S 8000-N LRV 6



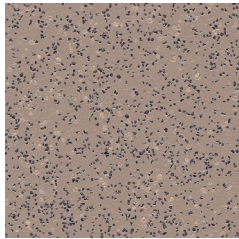
Chromite 4202 w/r 4760
NCS S 6500-N LRV 15



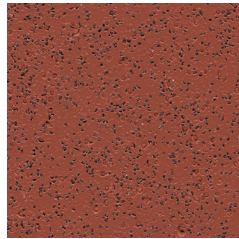
Green Quartz 4201 w/r 4350
NCS S 5005-G50Y LRV 24



Breccia 4204 w/r 4670
NCS S 5010-R90B LRV 18



Siltstone 4205 w/r 4205
NCS S 5005-Y80R LRV 23



Red Ochre 4206 w/r 4206
NCS S 5030-Y80R LRV 13

w/r - Weld Rod

LRV - Light Reflectance Value

NCS - Natural Colour System

Polyflor Ltd. Head Office

PO Box 3, Radcliffe New Road, Whitefield, Manchester, M45 7NR • Tel: +44 (0) 161 767 1111 • Email: info@polyflor.com • www.polyflor.com

© At the time of writing and publication of sheet, all the information is specified correctly. The company reserves the right to change the specifications of this product at any time without prior notice to third parties.

V1