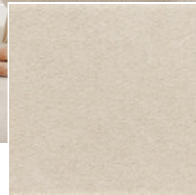


Serenade

TECHNICAL SPECIFICATIONS

Secondary backing: Smart Back
 Quality code: SRA
 Manufacturing process: Tufted
 Pile composition: PP



240 / Serenade / Cream



180
Rum



240
Cream



390
Copper



440
Ivory



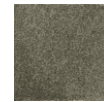
450
Sand



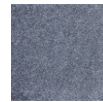
451
Sand 1



460
Hemp



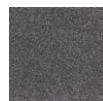
490
Stone
path



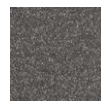
780
Steel



800
Ebony



820
Slate



840
Moonshine



850
Moonbeam



860
Granite



880
Pearl