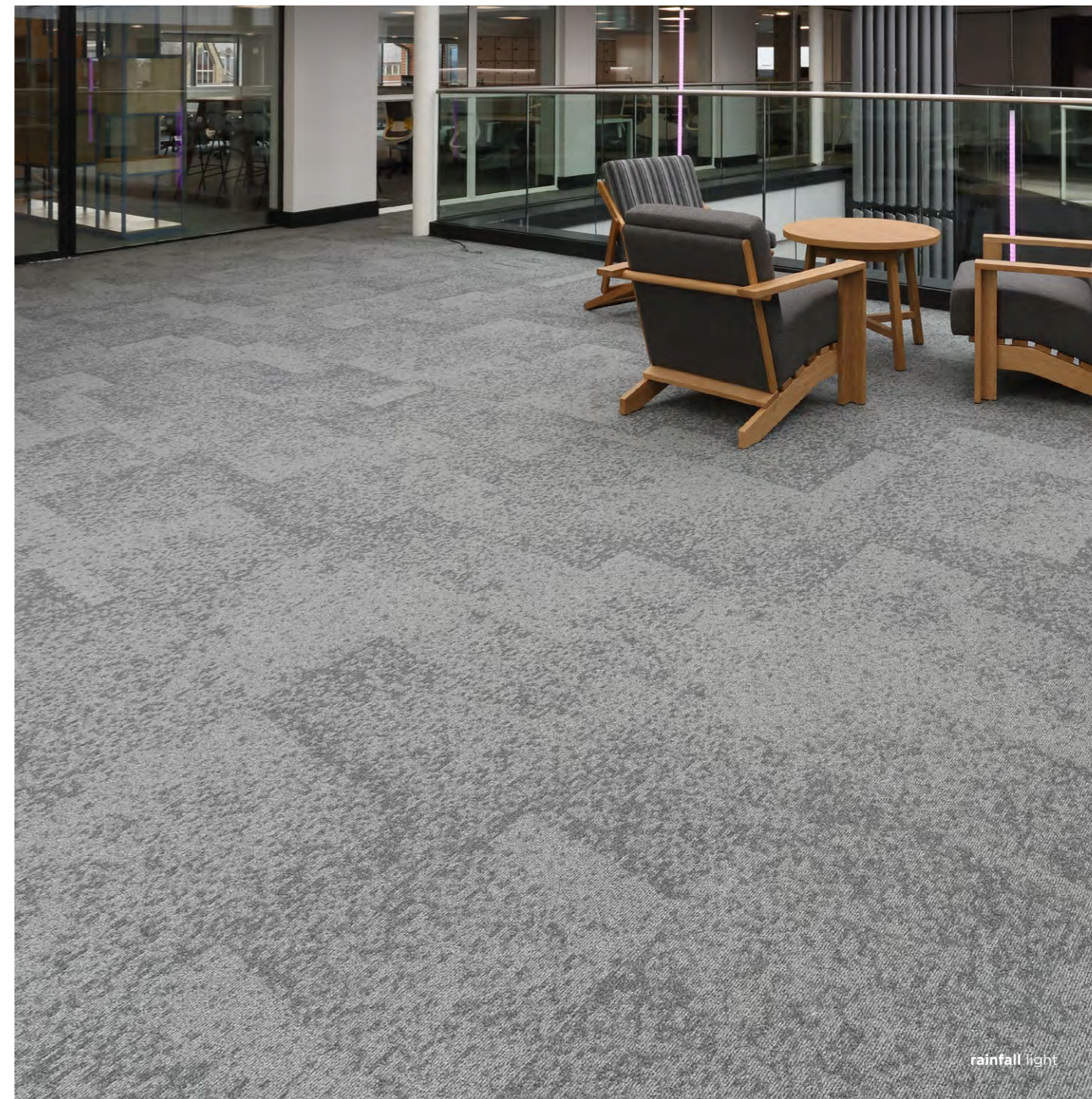
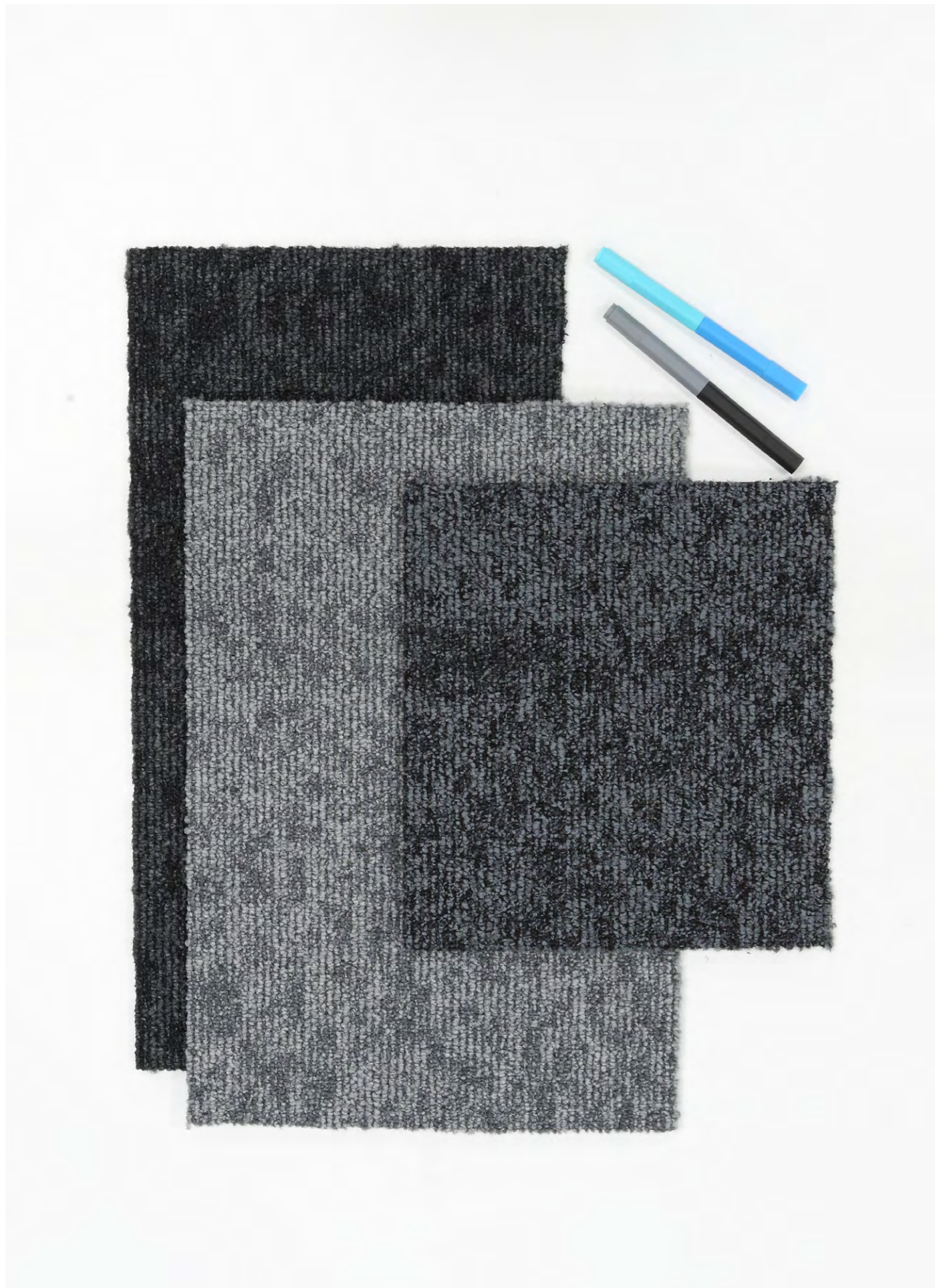


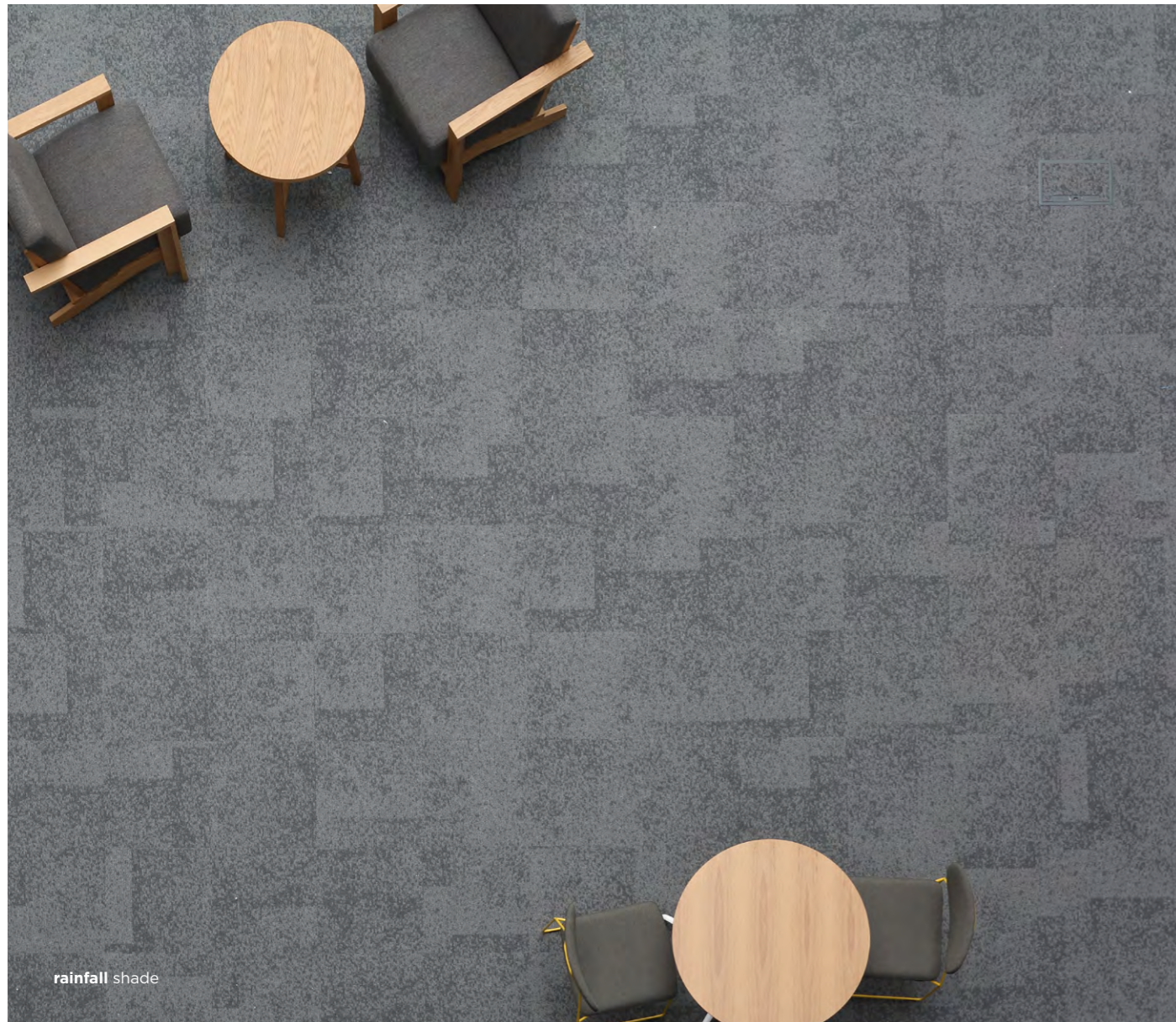
burmatex®



**multilevel loop
rainfall**



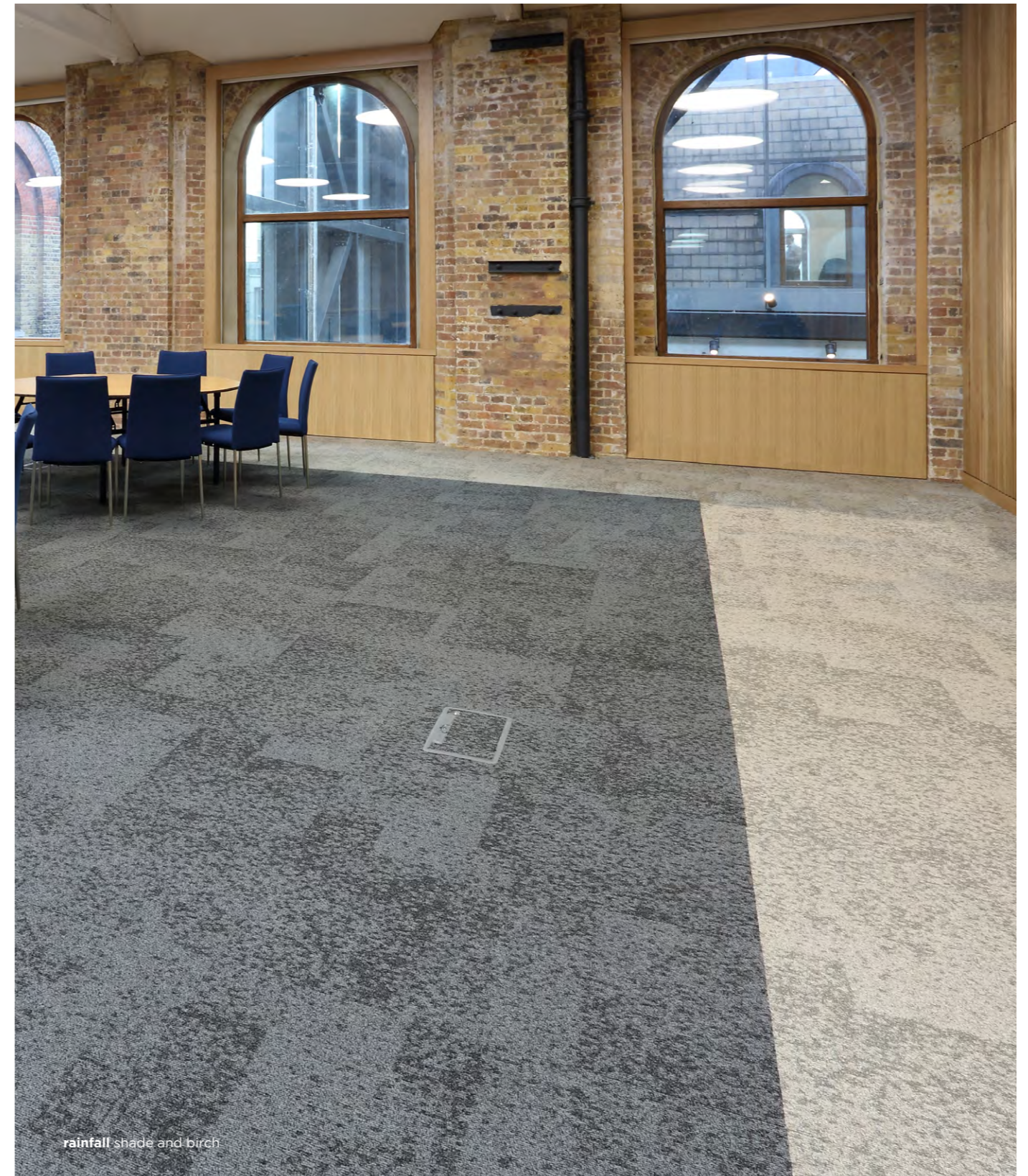
rainfall



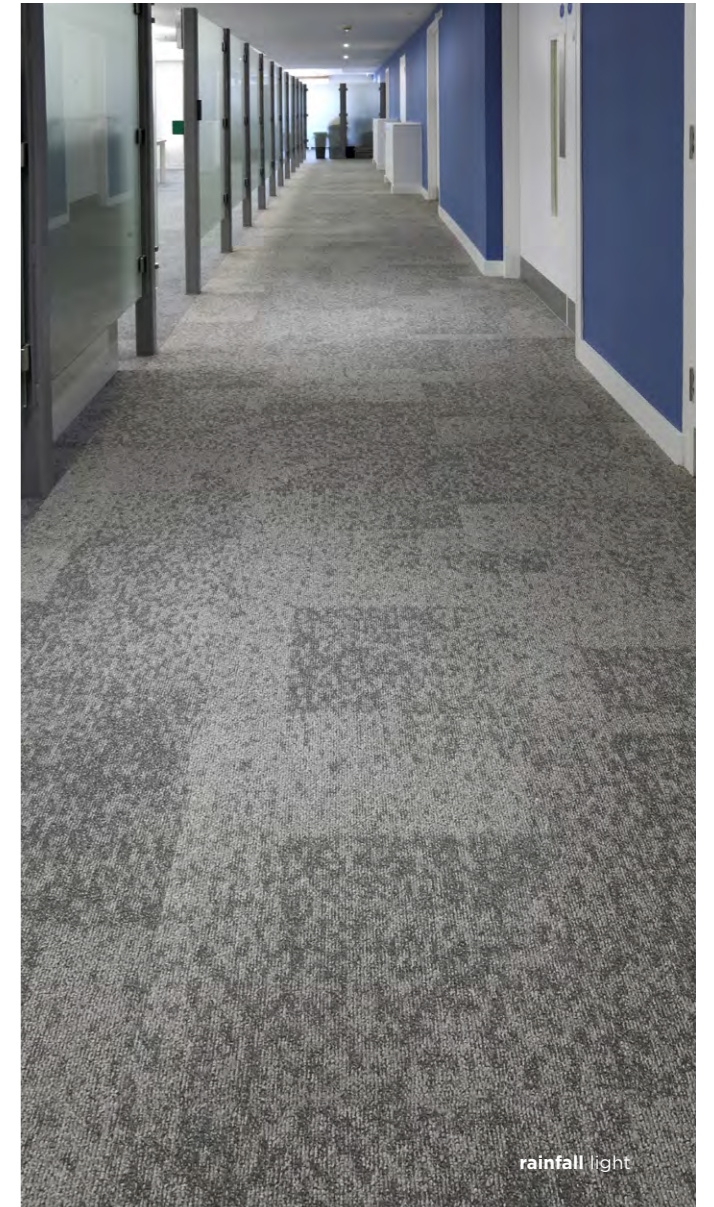
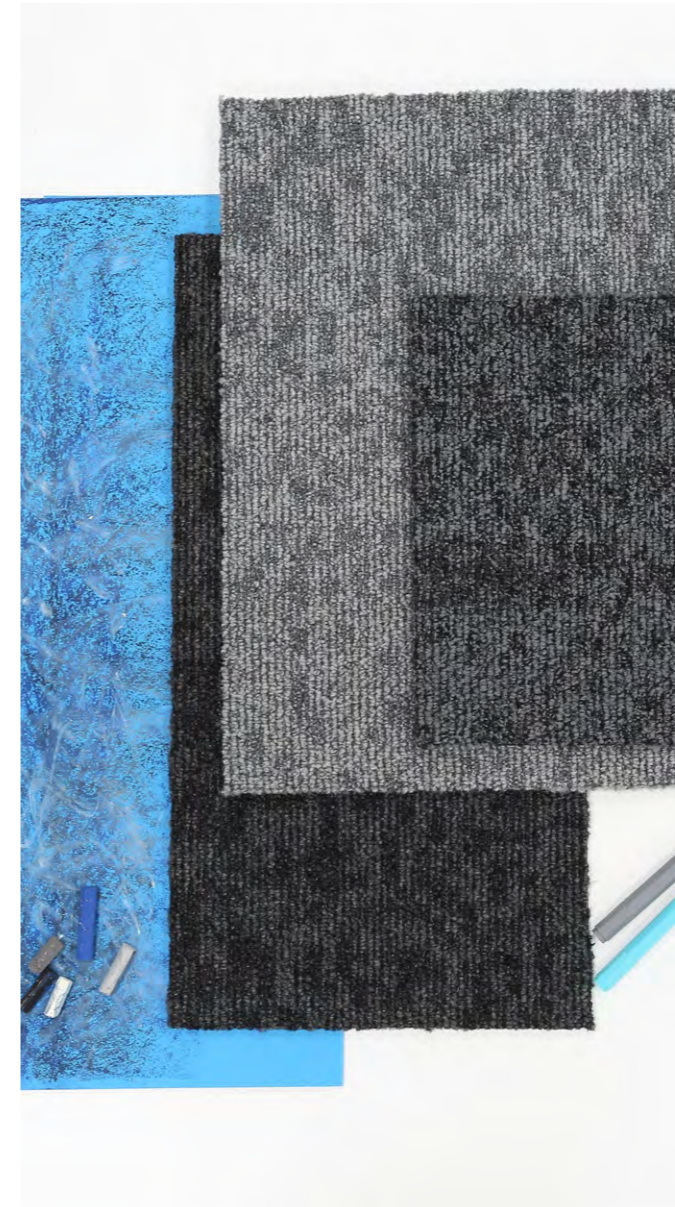
rainfall shade

As the name suggests, the patterns formed by rain drops inspired this soft and serene design.

With darker tones punctuating the surface of the pattern, **rainfall** is layered and soft in texture while offering a varied and randomly placed aesthetic.



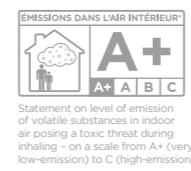
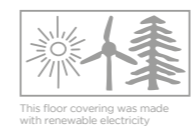
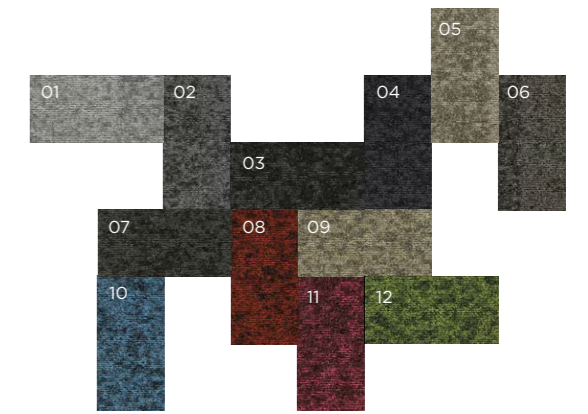
rainfall shade and birch



Pile Yarn Weight: 910g/m2
Luxury Rating Class: LC3
Wear Classification: Class 33
Yarn: 100% regenerated solution dyed nylon (Polyamide-PA)

colour bank

- 01 - light
- 02 - shade
- 03 - dark
- 04 - deep
- 05 - stone
- 06 - pave
- 07 - ground
- 08 - brick
- 09 - birch
- 10 - air
- 11 - bloom
- 12 - leaf



Creating a calm effect once installed, this design is the perfect solution to create a peaceful office or retail environment.

KEEP IN TOUCH



burmatex[®]

burmatex ltd

victoria mills, the green,
ossett, west yorkshire
wf5 0an

tel: +44 (0) 1924 262 525

fax: +44 (0) 1924 280 033

email: marketing@burmatex.co.uk

www.burmatex.co.uk