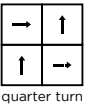
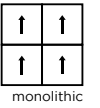


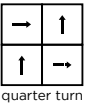
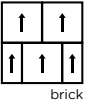
technical specifications

Product Description	Low Carbon Level Loop
Pile Yarn Description	EgoCycle[®] 75 recycled solution dyed nylon
Tile Dimensions	50cm x 50cm
Pile Yarn Weight	500g/m ²
Total Weight	3810g/m ²
Pile Height	3.0mm
Total Thickness	5.5mm
Construction	Tufted 1/10th gauge loop
Tufts per m ² / Pile Density	196,850/m ²
Backing Description	BioBase[®] backing (recycled EN 14021)
Wear Classification	class 33 heavy commercial use (BS EN 1307)
Luxury Rating Class	LC1
Flammability	Euroclass Bfl-s1
Thermal Resistance	Tog Rating: 0.42
Castor Chair Rating	BS EN 985 Pass - suitable for continuous use
Hexapod	BS ISO 10361: Method B:2000 3 to 4
Static Loading	BS 4939: 1987 (2003) Recovery >80% (24hrs)
Dynamic Loading	BS ISO 2094: 1999 (2005) Loss <20% (1000 impacts)
Body Voltage Test	BS ISO 6356:2000 <2kV
Colour Fastness To Light	BS EN ISO 105 - B02 Minimum Grade 6
Colour Fastness To Shampoo	BS 1006:UK-TB: 1990 Minimum Grade 4-5
Sound Absorption Coefficient	BS EN 354:2003
Reduction in Impact Noise	BS EN ISO 10140-3:2010 20dB
Reduction in Impact Noise at 1000Hz	BS EN ISO 10140-3:2010 28.5dB
Number Of Tiles Per Box	20 (5m ²)
VOC	Class A+
Warranty	15 years

go to



go to stripe



eco₂matters[®]

We are committed to helping deliver a sustainable future, because we believe that what we do **matters**. To help us deliver on this commitment, we have developed **eco₂matters[®]** sustainability goals, supported by the independently 3rd party verified **eco₂matters[®]** ecosystem.



Made from **EgoCycle[®] 75 recycled** solution dyed nylon, and our unique **BioBase[®] recycled** backing, **go to[®]** delivers class 33 Heavy Commercial Use performance at unrivalled value. Supported by high stock levels, and rapid delivery, the 20 colour palette of coordinating plains and stripes provides versatility for use in any space.



go to[®] is **low carbon**



go to[®] uses **EgoCycle[®] 75 recycled** yarn



go to[®] uses **BioBase[®] recycled** backing



Burmatex[®] reco₂very take back service provides a no landfill solution for your used tiles



Burmatex[®] products are made using 100% certified **renewable** electricity



eco₂matters[®] ecosystem is independently 3rd party verified

EPD
our products are supported by a 3rd party verified EPD

LEED
our products contribute towards Leed accreditation

SKA
our products adhere to SKA standards

WELL Building Standards
Our products contribute to WELL Building Standards

contact us
T +44 (0) 1924 262 525
F +44 (0) 1924 280 033
email: projects@burmatex.co.uk

Burmatex Ltd
Victoria Mills, The Green
Ossett, West Yorkshire
WF5 0AN, United Kingdom

www.burmatex.co.uk

LRV values

Product code	Product colour name	CIE Y
21801	jet black	3.01
21802	coal grey	5.21
21803	medium grey	9.19
21806	sea blue	6.45
21810	sky blue	12.13
21811	green	16.80
21813	light beige	21.14
21814	medium beige	13.20
21815	dark beige	9.07
21816	metal grey	6.27
21817	light grey	13.98
21818	moss green	12.53
21819	orange	12.04
21820	red	4.68
21821	purple	6.67
21822	deep blue	5.74
21902	coal grey stripe	10.36
21903	medium grey stripe	6.49
21906	sea blue stripe	4.83
21915	dark beige stripe	6.03