

Burmatex®

MANUFACTURERS OF CREATIVE FLOORING 



go to

low carbon carpet tiles

great for offices



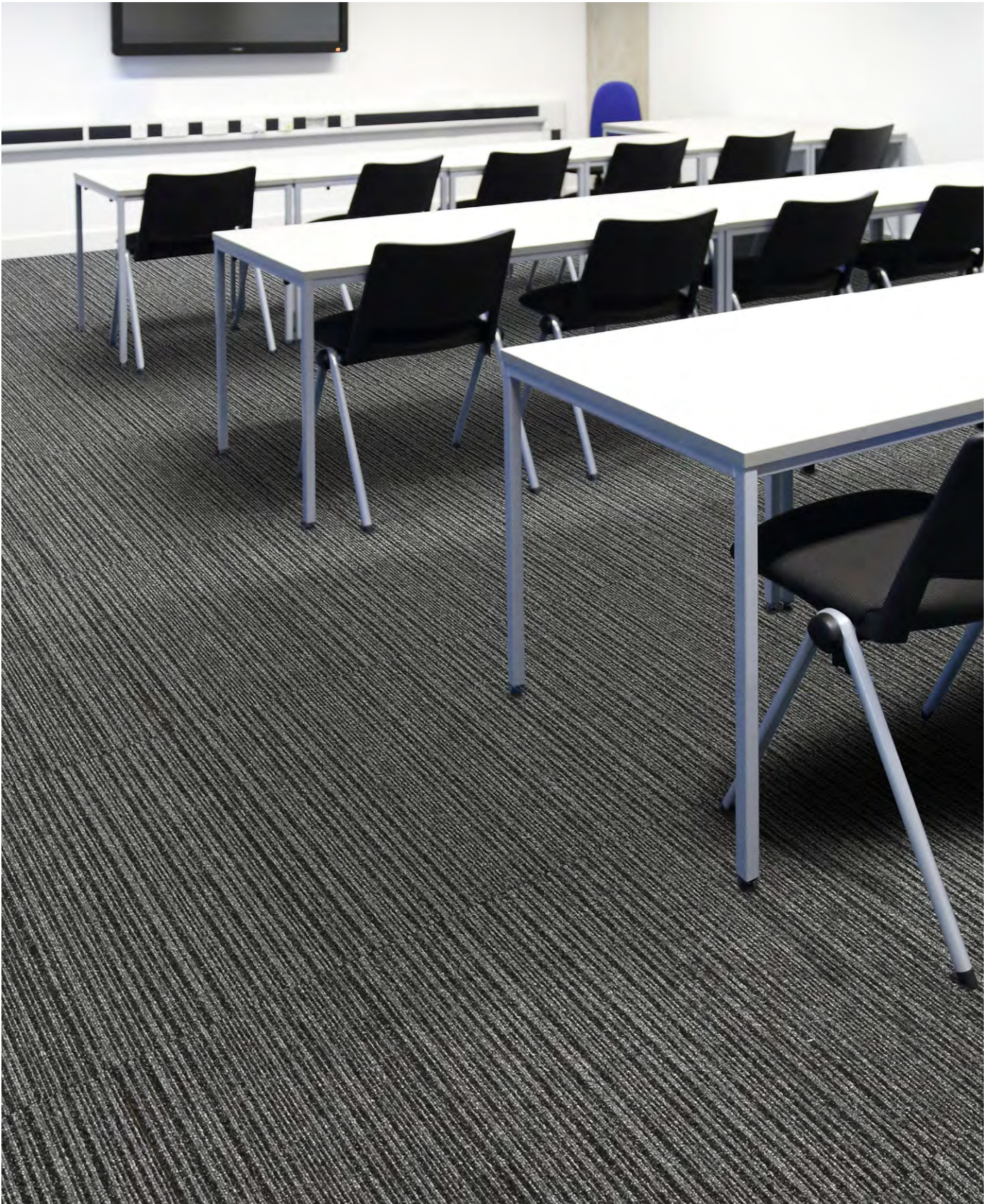
The refreshed palette of **go to** uses **EqoCycle®75 recycled** solution dyed nylon. This, combined with our **BioBase™ recycled** backing makes **go to** a **low carbon** carpet tile.

go to offers two designs, sixteen plains and four stripe options. The range of colours has been increased to create this attractively practical, versatile and flexible palette.

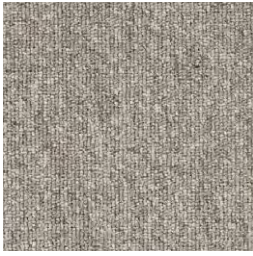
go to has a proven track record of high performance and resilience that Burmatex® carpet tiles are known for. This core level loop range is the go to choice for users that are looking for a quick and easy carpet installation option.



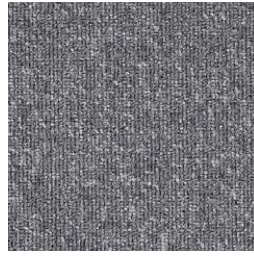
ideal for education



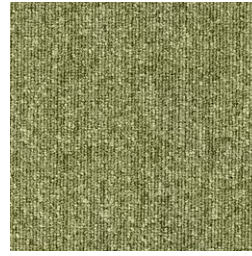
go to colour palette



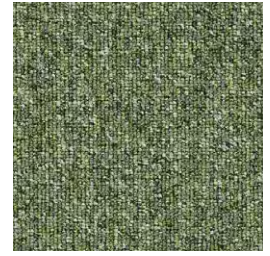
21813 light beige
LRV: Y 21.14 - L 53.64



21817 light grey
LRV: Y 13.98 - L 44.16



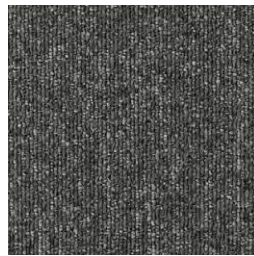
21811 green
LRV: Y 16.80 - L 48.49



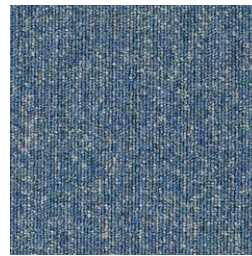
21818 moss green
LRV: Y 12.53 - L 42.02



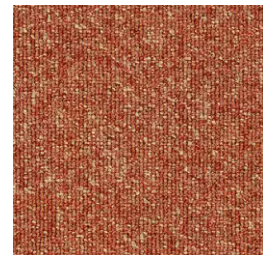
21814 medium beige
LRV: Y 13.20 - L 43.04



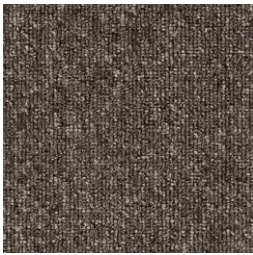
21803 medium grey
LRV: Y 9.19 - L 36.35



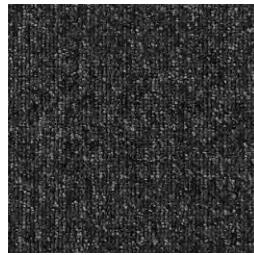
21810 sky blue
LRV: Y 12.13 - L 40.96



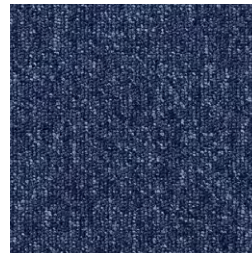
21819 orange
LRV: Y 12.04 - L 41.23



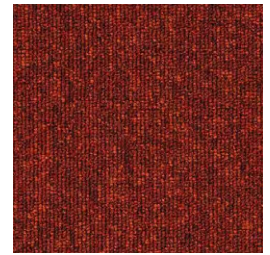
21815 dark beige
LRV: Y 9.07 - L 35.97



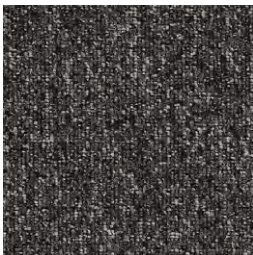
21802 coal grey
LRV: Y 5.21 - L 27.34



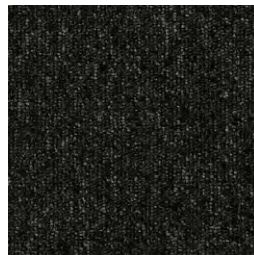
21806 sea blue
LRV: Y 6.45 - L 30.52



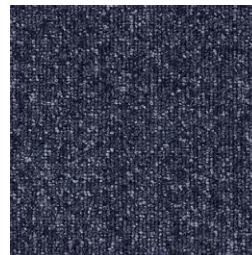
21820 red
LRV: Y 4.68 - L 25.62



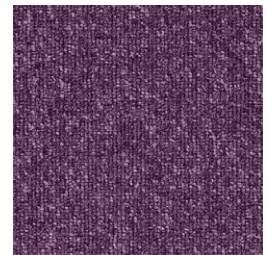
21816 metal grey
LRV: Y 6.27 - L 30.04



21801 jet black
LRV: Y 3.01 - L 20.09



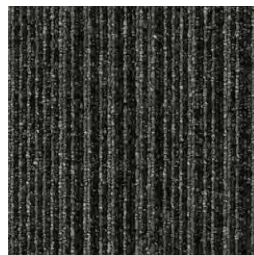
21822 deep blue
LRV: Y 5.74 - L 28.68



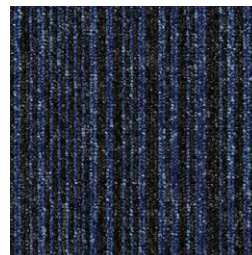
21821 purple
LRV: Y 6.67 - L 31.04



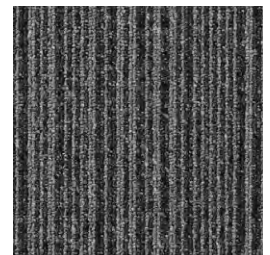
21915 dark beige stripe
LRV: Y 6.03 - L 29.16



21903 medium grey stripe
LRV: Y 6.49 - L 30.61



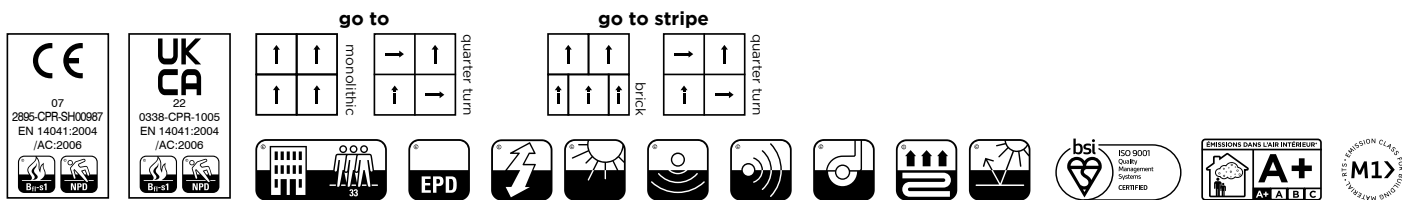
21906 sea blue stripe
LRV: Y 4.83 - L 26.25



21902 coal grey stripe
LRV: Y 10.36 - L 38.48

technical specification

Yarn	EgoCycle® 75 recycled solution dyed nylon
Dimensions	50cm x 50cm
Pile Weight	500g/m ²
Total Weight	3810g/m ²
Total Thickness	5.5mm
Construction	Tufted 1/10th gauge loop
Pile Density	196,850/m ²
Backing	BioBase™ backing (recycled BS EN ISO 14021)
Wear Classification	Class 33 Heavy Commercial Use (BS EN 1307)
Castor Chair Rating	Pass - continuous use (BS EN 985)
Luxury Rating Class	LC1
Flammability	Euroclass Bfl-s1
Static loading	BS 4939: 1987 (2003) Recovery >80% (24hrs)
Reduction in Impact Noise	BS EN ISO 10140-3:2010 20dB
VOC	Class A+
Warranty	15 years
Number Of Tiles Per Box	20 (5m ²)



eco₂matters®

We are committed to helping deliver a sustainable future, because we believe that what we do **matters**. To help us deliver on this commitment, we have developed **eco₂matters®**, our sustainability principles, supported by independent 3rd party verification.



Made from **EgoCycle® 75 recycled** solution dyed nylon, and our unique **BioBase™ recycled** backing, **go to** delivers class 33 Heavy Commercial Use performance at unrivalled value. Supported by high stock levels, and rapid delivery, the 20 colour palette of coordinating plains and stripes provides versatility for use in any space.

	go to is low carbon		Burmatex® reco₂very take back service provides a no landfill solution for your used tiles
	go to uses EgoCycle® 75 recycled yarn		Burmatex® products are made using 100% certified renewable electricity
	go to uses BioBase™ recycled backing		eco₂matters® declarations are independently 3rd party verified

EPD
Burmatex® products are supported by 3rd party independently verified, product specific EPD's

LEED
Burmatex® products contribute towards Leed accreditation

SKA
Burmatex® products adhere to SKA standards

WELL Building Standards
Burmatex® products contribute to WELL Building Standards



need a BIM object?

all our products have BIM objects available on our website

For more information about
go to low carbon carpet tiles
Visit www.burmatex.co.uk/goto

Need **advice**? Help with the **design**?
Call your Business Area Manager

Need a go to shadecard or samples?



Scan the QR code
Call +44 (0) 1924 262525
Email samples@burmatex.co.uk

Burmatex[®]

MANUFACTURERS OF CREATIVE FLOORING 

KEEP IN TOUCH



Burmatex Ltd
Victoria Mills, The Green,
Ossett, West Yorkshire
WF5 0AN