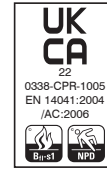
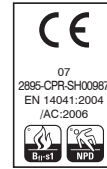
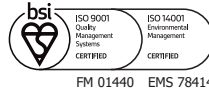
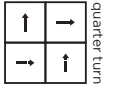


technical specifications

Product Description	Fibre Bonded
Yarn	85% Polypropylene 15% Nylon
Tile Dimensions	50cm x 50cm
Pile Yarn Weight	1200g/m ²
Total Weight	4900g/m ²
Total Thickness	10mm
Backing Description	BioBase® recycled backing (recycled BS EN ISO 14021)
Wear Classification	Heavy Contract
Flammability	Euroclass Bfl-s1
Thermal Resistance	Tog Rating 0.84; ISO 8302: 0.10 m ² K/W
Castor Chair Rating	Pass - continuous use (BS EN 985)
Static Loading	BS 4939: 1987 (2003) Recovery >80% (24hrs)
Dynamic Loading	BS ISO 2094: 1999 (2005) Loss <20% (1000 impacts)
Body Voltage Test	BS ISO 6356:2000 <2kV
Colour Fastness To Light	BS EN ISO 105 - B02 Minimum Grade 6
Colour Fastness To Shampoo	BS 1006:UK-TB: 1990 Minimum Grade 4
Sound Absorption Coefficient	BS EN 354:2003
Reduction in Impact Noise	BS EN ISO 10140-3:2010 21dB
Reduction in Impact Noise at 1000Hz	BS EN ISO 10140-3:2010 32.1dB
Number Of Tiles Per Box	12 (3m ²)
VOC	Class A+
Warranty	15 years



eco₂matters®

We are committed to helping deliver a sustainable future, because we believe that what we do **matters**. To help us deliver on this commitment, we have developed **eco₂matters®**, our sustainability principles, supported by independent 3rd party verification.



velour excel presents a luxurious, velour carpet tile suitable for use within the heavy contract market. The premium blend of solution dyed fibres ensures **velour excel** is ideal for use in both commercial and public buildings.



velour excel is **low carbon**



velour excel uses **BioBase® recycled** backing



Burmatex® reco₂very take back service provides a no landfill solution for your used tiles



Burmatex® products are made using 100% certified **renewable** electricity



eco₂matters® declarations are independently 3rd party verified

EPD
Burmatex® products are supported by 3rd party independently verified, product specific EPD's

LEED
Burmatex® products contribute towards Leed accreditation

SKA
Burmatex® products adhere to SKA standards

WELL Building Standards
Burmatex® products contribute to WELL Building Standards

Contact Us
T +44 (0) 1924 262 525
email: sales@burmatex.co.uk

Burmatex Ltd
Victoria Mills, The Green
Ossett, West Yorkshire
WF5 0AN, United Kingdom

LRV values

Product code	Product colour name	CIE Y
6022	assyrian jade	9.90
6023	iceni blue	2.56
6028	saxon blue	3.08
6036	phoenician green	2.73
6040	armenian grey	4.54
6045	trojan green	5.14
6050	norman steel	7.30
6055	dorian azure	5.42
6056	spartan mauve	7.00
6060	barona blue	3.32
6061	skydancer	7.73
6062	red lake	3.03
6066	navajo mauve	2.71
6070	yakama slate	1.82
6081	bavarian blue	5.95
6082	mayan sky	6.83
6083	norse green	4.10
6090	persian purple	2.68