

SAFETRED Next Generation: Universal, Spectrum, Serenity, Wood, Mineral, Harmony, Sound – R10, R11 & R12

HETEROGENEOUS SAFETY VINYL FLOORING

2025

Installation Instructions

CONDITIONS AND REQUIREMENTS

- The subfloor must be clean, dry and free from cracks. Dust and contaminants that could prevent adhesion, such as patches of paint, oil, etc., must be removed. Note that asphalt, oil spillage, impregnation agents, pen marks, etc., can cause discolouration. Where required an effective damp proof membrane must be incorporated in the subfloor. Damp proofing should be carried out according to local building standards. Check for dampness in ground supported floors, floors above boiler rooms, floors with underfloor heating or containing high temperature pipework etc.
- When installing this product on concrete subfloors that do not have damp proofing, the moisture content measured in terms of relative humidity should be in accordance with the current relevant Standard within the country of use - not higher than 75% in the UK and Ireland (according to BS 8203), or less than 2% with CM (Carbide Method) in Germany and 4% in France. Please verify with country specific standards.
- Where underfloor heating units are installed within the concrete slab, the heating units; shall be turned on prior to the laying of the floor covering for 3-4 weeks to ensure that the moisture condition of the heated subfloor will permit successful laying of the floor covering; should be turned off 48 hours prior to the commencement of installation to allow the subfloor to return to the temperature range recommended by the manufacturer of the floor covering; and the heating units shall remain turned off during the laying operations and shall not be turned on again until 48 hours after the laying is completed in order to allow the adhesive to set. The temperature should never exceed the floor covering industry's agreed maximum of 27°C on the underside of the floor covering (the adhesive range).
- Extra special care must be taken regarding installations on surfaces where significant temperature changes can be expected, for example, floors exposed to strong sunlight, as adhesion strength and subfloor treatment may be heavily stressed.

PREPARATION

- Dust and loose particles must be thoroughly removed. Highly absorbent or variably absorbent substrates should be sealed with a suitable primer. The primed surface must be completely dry before laying commences.
- When applying smoothing compounds, use compounds that meet the minimum requirements in the building Standards.
NOTE: Discolouration can occur when using two-parts polyester compounds if they are mixed incorrectly and/or insufficiently. Do not mix directly on the substrate.
- Use only a pencil for marking. Note that any marks made with felt-tipped pens, permanent and non permanent ink markers, ball point pens etc. can cause discolouration due to migration.
- If material from several rolls is used, they should have the same manufacturing serial numbers and be used in a consecutive order.
- Prior to laying, allow the material, adhesive and subfloor to reach room temperature, i.e. a temperature of at least 18°C. The relative air humidity should be 30-60%. Rolls must be stored indoors at least 24 hours (preferably 48 hours) before installation.
- The rolls should be stored on an even surface. Any faults in the material must be reported immediately to your local sales office. Always quote the colour and roll numbers, which are stated on the label.
- Store 2 m rolls upright in a safe position with distance between the rolls.

LAYING DIRECTION

Safetred range	Laying direction
Universal R10/R11/R12	Reverse laid
Spectrum	Reverse laid
Serenity	Reverse laid
Mineral	Reverse laid
Harmony	Reverse laid
Wood	Same direction

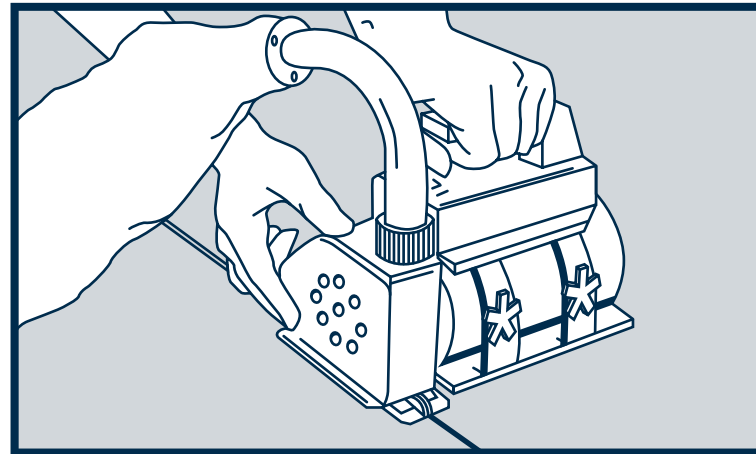
INSTALLATION

- Installation should be carried out at room temperature between 18°C and 25°C. The subfloor temperature must be at least 10°C. The relative air humidity in the premises should be 30-60%. For at least 72 hours after installation, the same temperature and humidity should be maintained.
- Let the flooring acclimatise at least 24h before laying. Cut the sheets to length and lay them out to relax, 24 hours prior to installation. This is particularly important for longer lengths.
- Before starting installation, determine the method of laying taking into account the shape of the room and the design to be laid. Plan the sheet direction for the area to be installed to ensure whenever possible that joints do not coincide with doorways, main traffic lanes, or sinks/urinals. If the room is reasonably square, the sheets should run parallel to the incoming light. In long, narrow rooms it is best to install the sheets along the length of the room.
- Laying direction – see table above.
- Use a butt joint when production edges are straight and if all conditions allow. If not, overlap the edges and trim the two sheets simultaneously (double cut method). Consideration on pattern alignment of Safetred Wood should be considered.
- The sheets are fully adhered with an adhesive approved for Tarkett's Safetred sheet. See the adhesive manufacturer's instructions regarding coverage, open time, trowel size etc. Examples of suitable adhesives can be found at professionals.tarkett.com
- Rub the face surface down thoroughly using a piece of board with a rounded edge to ensure that the floor covering makes good contact with the adhesive and that all air is expelled. Make sure that the tool used for rubbing down the floor covering does not scratch the surface. A broom is not suitable for this purpose. Use a floor roller (approx. 65 kg) and roll crosswise over the floor to ensure final bonding.
- The installation time depends on the adhesive, the type of substrate, its absorbency, the temperature and air humidity in the premises.

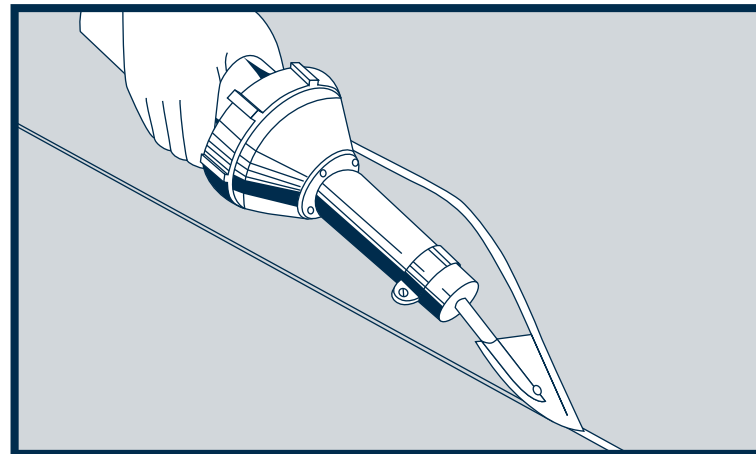
WELDING

- Hot welding with a welding rod is recommended for rolls.

Important! Do not weld until the adhesive has bonded completely (wait 24 to 48 hours, according to the adhesive manufacturer's instructions).



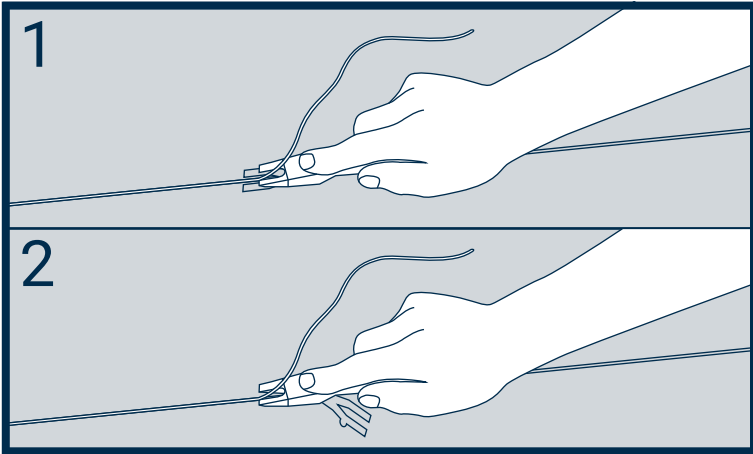
- The joints are chamfered or grooved to about 2/3 of the material thickness using a hand grooving tool or machine prior to welding. The grooving depth of seams must never be deeper than 2/3 of the thickness of the material.



- Weld with hot-air and speed welding nozzle.
- Carry out a test welding on a left-over piece before commencing work, to adjust speed and temperature.

TRIMMING

- Trim the rod in 2 stages: directly after welding with a quarter-moon knife (or Mozart knife) with a trimming guide.
- After the welding rod has cooled trim without the trimming guide.



COVING

- Safetred can be self-coved using a cove former with a radius between 1.5 cm and 4 cm. Extending up the wall to the desired height, usually between 100 mm & 150 mm, and typically finished with a PVC capping seal.

INSPECTION

- The work must be completed with an inspection. Ensure that the newly laid flooring is free from adhesive residue and that the bond is consistent with no bubbles.

AFTER INSTALLATION

- Always protect the floor with thick paper, hard board or similar during the construction period. If using tape, this must not be applied directly to the floor surface.
- **IMPORTANT!** Restrict foot traffic for 24 hours after installation. No heavy traffic, rolling loads or furniture placement for 72 hours after installation. Most suppliers of floor adhesives specify 72 hours before absolute strength is achieved.

FOR BEST RESULTS

- Use only adhesives recommended by adhesive manufacturers.
- Use a matting system at entrances to protect from dirt and dust. Rubber can cause discolouration to the floor.

GENERAL

- Contact your Tarkett representative if unsure about any part of the installation.
- This information is subject to change for continuous improvement.

EXCLUSION OF LIABILITY

- Although Tarkett may list a selection of adhesive, levelling compound and surface damp-proof membrane manufacturers and types, we do not guarantee the products listed. The list of products and manufacturers is not guaranteed complete or current. Tarkett will accept no liability for any of these products failing to perform in conjunction with any of its products.