

Burmatex®

MANUFACTURERS OF CREATIVE FLOORING 



infinity®

low carbon carpet tiles

great for offices



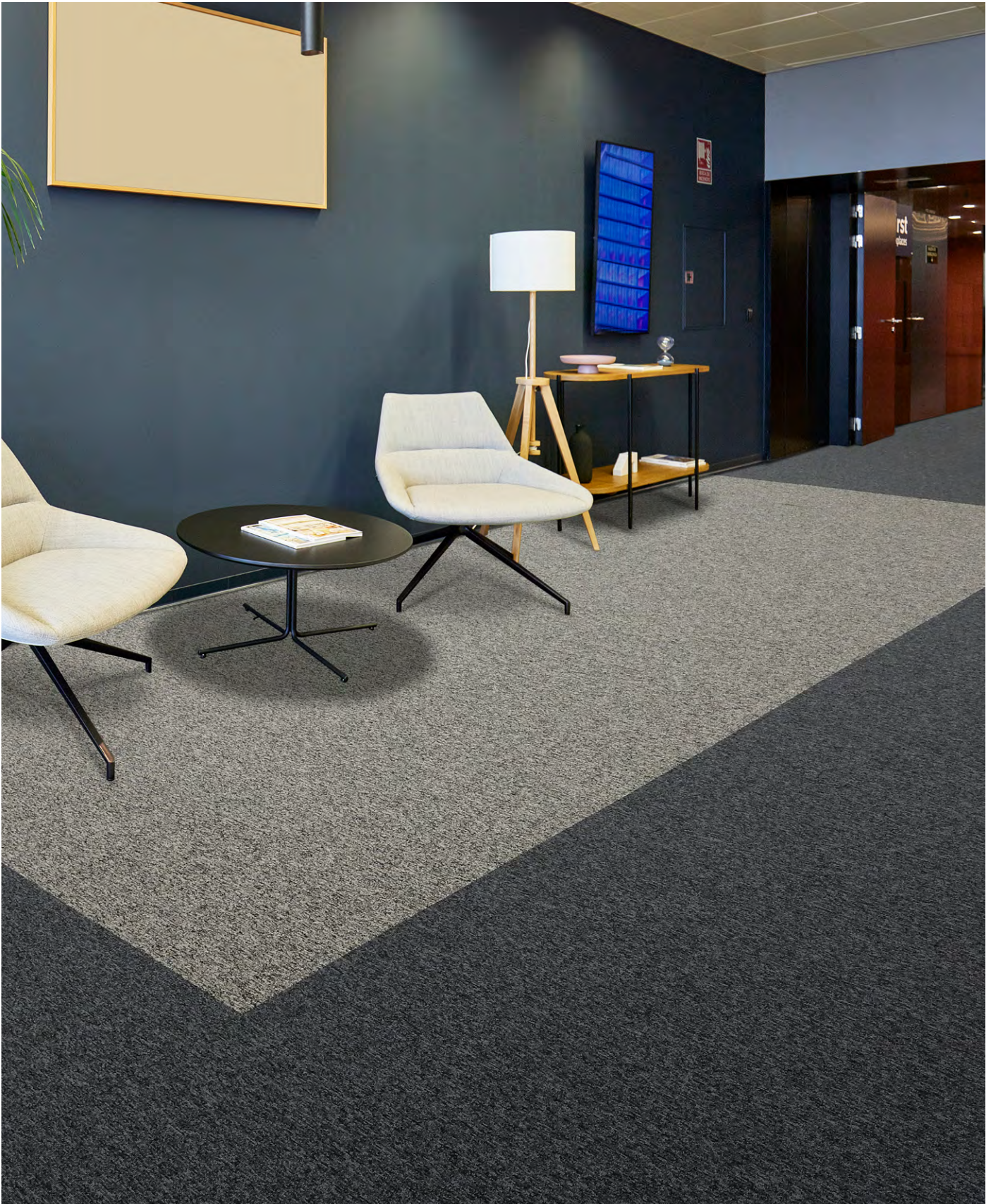
Made from 100% **Econyl**® **regenerated recyclable** solution dyed nylon yarn and our unique **BioBase™ recycled** backing, **infinity**® is **low carbon**.

The high contrast speckled appearance of **infinity**® provides excellent soil hiding properties and makes it the ultimate product for high traffic areas, such as corridors, entrance ways, and offices.

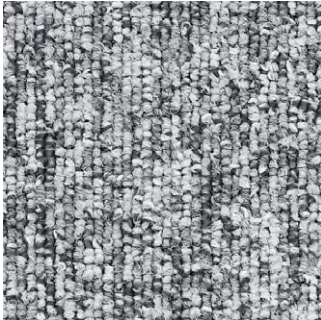
infinity® is a 550g level loop pile carpet tile collection of 16 shades, inspired by flecked textures and colours found in raw materials and nature. Visual inspiration from rocks, gemstones, coastlines, and minerals help to create the individual aspect of this heavy commercial range.



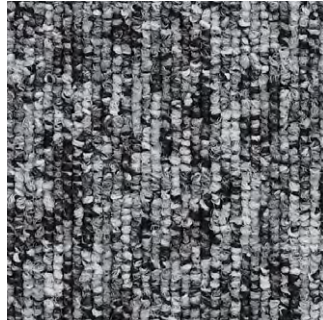
ideal for education interiors



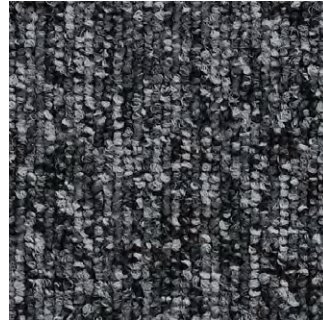
infinity® colour palette



34705 ice mineral
LRV: Y 21.64



34701 slate grey
LRV: Y 14.76



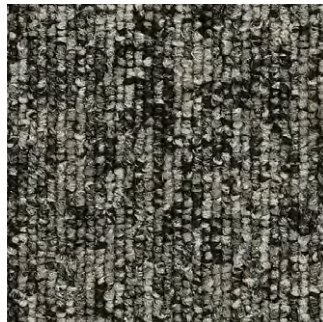
34702 silver salt
LRV: Y 8.70



34703 stone shadow
LRV: Y 4.56



34706 quartz sand
LRV: Y 13.95



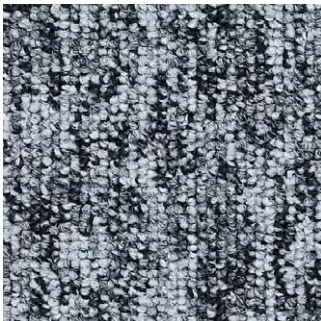
34704 gravel greige
LRV: Y 9.17



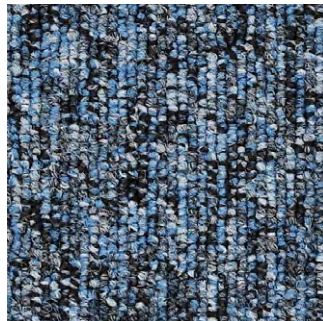
34707 sepia fusion
LRV: Y 10.13



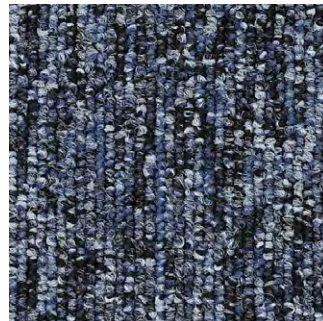
34711 bronze brown
LRV: Y 4.78



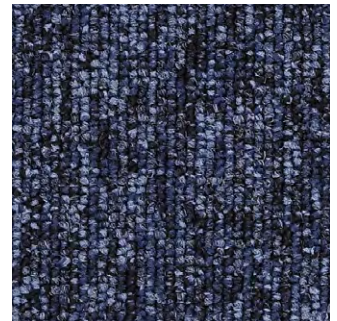
34712 cold cove
LRV: Y 15.95



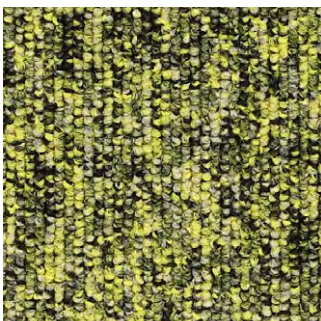
34708 cyan flux
LRV: Y 11.22



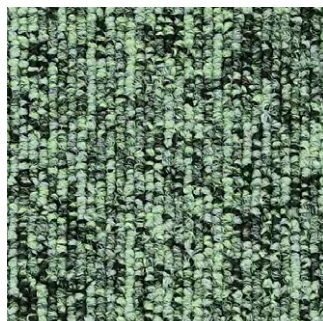
34709 base blue
LRV: Y 8.12



34710 navy element
LRV: Y 4.71



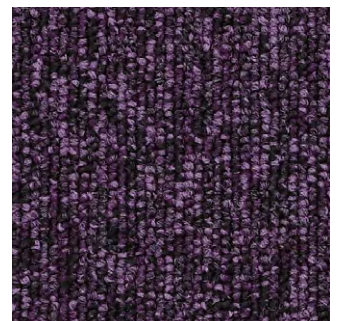
34713 ultra yellow
LRV: Y 16.75



34714 jade layer
LRV: Y 14.01



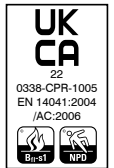
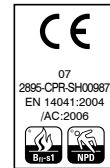
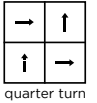
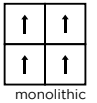
34715 cherry shade
LRV: Y 4.87



34716 purple prism
LRV: Y 3.56

technical specifications

Product Description	Low carbon level loop
Pile Yarn Description	100% Econyl® regenerated recyclable solution dyed nylon
Tile Dimensions	50cm x 50cm
Pile Yarn Weight	550g/m ²
Total Weight	4000g/m ²
Pile Height	4.3mm
Total Thickness	6.8mm
Construction	Tufted 1/10th gauge loop
Tufts per m2 / Pile Density	177,165/m ²
Backing Description	BioBase™ recycled backing (recycled EN 14021)
Wear Classification	Class 33 heavy commercial use (BS EN 1307)
Luxury Rating Class	LC1
Flammability	Euroclass Bfl-s1
Thermal Resistance	Tog Rating: 0.43
Castor Chair Rating	BS EN 985 Pass - suitable for continuous use
Hexapod	BS ISO 10361: Method B:2000 3 to 4
Static Loading	BS 4939: 1987 (2003) Recovery >80% (24hrs)
Dynamic Loading	BS ISO 2094: 1999 (2005) Loss <20% (1000 impacts)
Body Voltage Test	BS ISO 6356:2000 <2kV
Colour Fastness To Light	BS EN ISO 105 - B02 Minimum Grade 6
Colour Fastness To Shampoo	BS 1006:UK-TB: 1990 Minimum Grade 4-5
Sound Absorption Coefficient	BS EN 354:2003
Reduction in Impact Noise	BS EN ISO 10140-3:2010 23dB
Reduction in Impact Noise at 1000Hz	BS EN ISO 10140-3:2010 35.3dB at 1000Hz
Number Of Tiles Per Box	20 (5m ²)
VOC	Class A+
Warranty	15 years



eco₂matters®

We are committed to helping deliver a sustainable future, because we believe that what we do **matters**. To help us deliver on this commitment, we have developed **eco₂matters®**, our sustainability principles, supported by independent 3rd party verification.



Made from 100% **Econyl® regenerated recyclable** solution dyed nylon yarn and our unique **BioBase™ recycled** backing, **infinity®** is **low carbon**. The colour palette of 16 colours with excellent soil hiding properties along with its high contrast speckled appearance makes it the ultimate product for high traffic areas.



infinity® is **low carbon**



Burmatex® reco₂very take back service provides a no landfill solution for your used tiles



infinity® is made from 100% **Econyl® regenerated recyclable** yarn



Burmatex® products are made using 100% certified **renewable** electricity



infinity® uses **BioBase™ recycled** backing



eco₂matters® declarations are independently 3rd party verified

EPD
our products are supported by a 3rd party verified EPD

LEED
our products contribute towards Leed accreditation

SKA
our products adhere to SKA standards

WELL Building Standards
Our products contribute to WELL Building Standards



need a BIM object?
all our products have BIM objects available on our website

For more information about
infinity[®] **low carbon** carpet tiles
Visit www.burmatex.co.uk/infinity

Need **advice**? Help with the **design**?
Call your Business Area Manager

Need an infinity[®] shadecard or samples?



Scan the QR code
Call +44 (0) 1924 262525
Email samples@burmatex.co.uk

Burmatex[®]

MANUFACTURERS OF CREATIVE FLOORING 

KEEP IN TOUCH



Burmatex Ltd
Victoria Mills, The Green,
Ossett, West Yorkshire
WF5 0AN