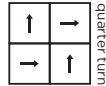
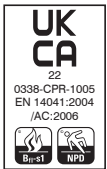


technical specifications

	tiles	sheet
Fibre Composition	80% Polypropylene 15% Nylon 5% Recycled Polyester	80% Polypropylene 15% Nylon 5% Recycled Polyester
Dimensions	50cm x 50cm	30m x 2m
Pile Weight	950g/m ²	
Total Weight	4200g/m ²	950g/m ²
Total Thickness	7.8mm	6mm
Backing	BioBase® recycled backing (recycled BS EN ISO 14021)	
Wear Classification	Heavy Contract	Heavy Contract
Flammability	Euroclass Bfl-s1	Euroclass Bfl-s1
Thermal Resistance	Tog Rating 0.84	Tog Rating 0.89; ISO 8302: 0.09 m2K/W
Castor Chair Rating	Pass - continuous use (BS EN 985)	Pass - continuous use (BS EN 985)
Static Loading	BS 4939:1987 (2003) Recovery >80% (24hrs)	BS 4939:1987 (2003) Recovery >80% (24hrs)
Dynamic Loading	BS ISO 2094:1999 (2005) Loss <20% (1000 impacts)	BS ISO 2094:1999 (2005) Loss <20% (1000 impacts)
Body Voltage Test	BS ISO 6356:2000 <2kV	BS ISO 6356:2000 <2kV
Colour Fastness To Light	BS EN ISO 105 - B02 Minimum grade 6	BS EN ISO 105 - B02 Minimum grade 6
Colour Fastness To Shampoo	BS 1006:UK-TB: 1990 Minimum Grade 4	BS 1006:UK-TB: 1990 Minimum Grade 4-5
Sound Absorption Coefficient	BS EN 354:2003	BS EN 354:2003
Reduction in Impact Noise	BS EN ISO 10140-3:2010 18dB	BS EN ISO 140-8: Part 8: 1998 18dB
Reduction in Impact Noise at 1000Hz	BS EN ISO 140-8: Part 8: 1998 16.1dB	BS EN ISO 140-8: Part 8: 1998 29.6dB
VOC	A+	A+
Warranty	15 years	15 year
Number of Tiles per Box	20 (5m ²)	



FM 01440 EMS 784147

eco₂matters®

We are committed to helping deliver a sustainable future, because we believe that what we do **matters**. To help us deliver on this commitment, we have developed **eco₂matters**® sustainability goals, supported by the independently 3rd party verified **eco₂matters**® ecosystem.



Journey to Net Zero & Beyond



Positive Environmental Impact



Social Values & Well Being

Made from solution dyed fibres including 5% recycled polyester and our unique **BioBase®** recycled backing, **cordiale** is **low carbon**. The extremely durable fine ribbed carpet, available in tile or sheet making it easy to maintain, and features **anti-fray** and **anti-ravel** technology. The palette of 40 colours is an ideal choice for use in schools, colleges and universities, perfect for heavy footfall environments.



low carbon

cordiale is **low carbon**



**anti-fray
anti-ravel**

cordiale features **anti-fray/anti-ravel** technology



**BioBase®
backing**

cordiale tiles use **BioBase® recycled** backing



take back service

Burmatex® reco₂very take back service provides a no landfill solution for your used tiles



100% certified renewable

Burmatex® products are made using 100% certified **renewable** electricity



independently 3rd party verified

eco₂matters® declarations are independently 3rd party verified

EPD

Burmatex® products are supported by 3rd party independently verified, product specific EPD's

LEED

Burmatex® products contribute towards Leed accreditation

SKA

Burmatex® products adhere to SKA standards

WELL Building Standards

Burmatex® products contribute to WELL Building Standards

Contact Us
T +44 (0) 1924 262 525
email: sales@burmatex.co.uk

Burmatex Ltd
Victoria Mills, The Green
Ossett, West Yorkshire
WF5 0AN, United Kingdom

LRV values

Product code tiles	Product code sheet	Product colour name	CIE Y
12105	12005	diamond	11.70
12160	12060	silver	8.32
12103	12003	clouds	6.07
12102	12002	charcoal	3.19
12101	12001	ebony	2.35
12104	12004	storm	9.05
12119	12019	horizon	8.23
12117	12017	denim	5.83
12161	12061	ocean	4.10
12107	12007	ink	2.73
12181	12081	sky	6.67
12162	12062	sapphire	3.44
12114	12014	atlantis	3.79
12163	12063	ultramarine	3.85
12164	12064	midnight	2.27
12191	12091	stones	14.76
12134	12034	honey	13.24
12178	12078	sand	7.48
12165	12065	earth	4.51
12166	12066	electric	5.36
12167	12067	saffron	21.24
12168	12068	tangerine	14.14
12169	12069	crimson	5.88
12185	12085	paprika	4.52
12170	12070	cherry	2.93
12171	12071	sagebrush	8.16
12172	12072	fern	7.37
12130	12030	lime	8.83
12183	12083	emerald	4.97
12125	12025	sea	6.59
12182	12082	aqua	9.40
12173	12073	peacock	6.72
12122	12022	turquoise	5.02
12113	12013	lavender	5.32
12174	12074	lilac	7.84
12184	12084	violet	2.71
12175	12075	mauve	9.62
12176	12076	rose	5.73
12177	12077	orchid	3.72
12180	12080	indigo	3.20