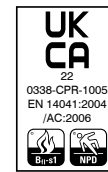
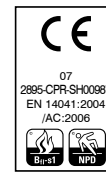
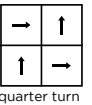
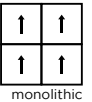


## technical specifications

Product Description	Performance Entrance Barrier
Pile Yarn Description	100% <b>Econyl® regenerated</b> solution dyed nylon
Tile Dimensions	50cm x 50cm
Pile Yarn Weight	920g/m <sup>2</sup>
Total Weight	4500g/m <sup>2</sup>
Pile Height	7.5mm
Total Thickness	10.0mm
Construction	Tufted 1/10th gauge loop
Tufts per m <sup>2</sup> / Pile Density	110,236/m <sup>2</sup>
Backing Description	<b>BioBase™</b> backing (recycled EN 14021)
Wear Classification	Class 33 heavy commercial use (BS EN 1307)
Luxury Rating Class	LC3
Flammability	Euroclass Bfl-s1
Castor Chair Rating	BS EN 985 Pass - suitable for continuous use
Hexapod	BS ISO 10361: Method B:2000 3 to 4
Static Loading	BS 4939: 1987 (2003) Recovery >80% (24hrs)
Dynamic Loading	BS ISO 2094: 1999 (2005) Loss <20% (1000 impacts)
Body Voltage Test	BS ISO 6356:2000 <2kV
Colour Fastness To Light	BS EN ISO 105 - B02 Minimum Grade 6
Colour Fastness To Shampoo	BS 1006:UK-TB: 1990 Minimum Grade 4-5
Number Of Tiles Per Box	16 (4m <sup>2</sup> )
VOC	Class A+
Warranty	15 years



## eco<sub>2</sub>matters®

We are committed to helping deliver a sustainable future, because we believe that what we do **matters**. To help us deliver on this commitment, we have developed **eco<sub>2</sub>matters®** sustainability goals, supported by the independently 3rd party verified **eco<sub>2</sub>matters®** ecosystem.



**Journey to Net Zero & Beyond**



**Positive Environmental Impact**



**Social Values & Well Being**

Made from 100% **Econyl® regenerated** solution dyed nylon yarn and our unique **BioBase™ recycled** backing. **armour** uses the latest yarn technology to maximise moisture absorption, actively scrape away dirt, and provide heavy duty performance. This enables **armour** to remove up to 90% of the dirt and moisture tracked into a building, making it the ideal choice for entrance areas, lobbies, lifts and staircases. Use **armour** to make the right first impression, and to protect your interior flooring finishes.



**Protects**

**armour** protects interior flooring finishes



**100% Econyl®**

**armour** is made from 100% **Econyl® regenerated** yarn



**BioBase™ backing**

**armour** uses **BioBase™ recycled** backing



**take back service**

**Burmatex® reco<sub>2</sub>very** take back service provides a no landfill solution for your used tiles



**100% certified renewable**

**Burmatex®** products are made using 100% certified **renewable** electricity



**independently 3rd party verified**

**eco<sub>2</sub>matters®** declarations are independently 3rd party verified

### EPD

**Burmatex®** products are supported by 3rd party independently verified, product specific EPD's

### LEED

**Burmatex®** products contribute towards Leed accreditation

### SKA

**Burmatex®** products adhere to SKA standards

### WELL Building Standards

**Burmatex®** products contribute to WELL Building Standards



### need a BIM object?

all our products have BIM objects available on our website

### need samples?

scan the QR code, call +44 (0) 1924 262525, visit our website or email us at [samples@burmatex.co.uk](mailto:samples@burmatex.co.uk)



contact us  
T +44 (0) 1924 262 525  
email: [sales@burmatex.co.uk](mailto:sales@burmatex.co.uk)

Burmatex Ltd  
Victoria Mills, The Green  
Ossett, West Yorkshire  
WF5 OAN, United Kingdom

[www.burmatex.co.uk](http://www.burmatex.co.uk)